

# COVID-19 Vaccination Planning

Kim Coley, PharmD, FCCP  
Professor of Pharmacy & Therapeutics  
University of Pittsburgh School of Pharmacy

December 9, 2020




---

---

---

---

---

---

---

---

## Becoming a COVID-19 Vaccine Provider\*\*

- ▶ Complete CDC COVID-19 Vaccination Program Provider Agreement on the PA DOH website:  
[https://expressforms.pa.gov/apps/pa/DOH/CDC\\_COVID-19Vaccination-Provider-Agreement](https://expressforms.pa.gov/apps/pa/DOH/CDC_COVID-19Vaccination-Provider-Agreement)
- ▶ Section A: Organizational Information; Provider Requirements and Legal Agreement
- ▶ Section B: Provider Profile Information – fill out for each pharmacy location
- ▶ *What if I filled out the provider form but haven't heard back from the PA DOH?*

\*\*The Philadelphia Department of Health is separate from the PA DOH. Pharmacies located in Philadelphia must sign up with their department of health

---

---

---

---

---

---

---

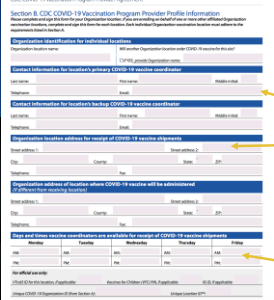
---

CDC COVID-19 Vaccination Program Provider Agreement

**Section B – Provider Profile**

Site location information: facility type, address, contact info

Vaccine receipt hours



Monday	Tuesday	Wednesday	Thursday	Friday
AM	AM	AM	AM	AM
PM	PM	PM	PM	PM

---

---

---

---

---

---

---

---

[illegible]

---

---

---

---

---

---

**COVID-19 Vaccination Program Provider Agreement**

**Registration** - record by this location lists all that apply

- Community health center
- Long-term care facility
- Community-based organization
- Other (specify):

**Inventory** - record by this location lists all that apply

- Community health center
- Long-term care facility
- Community-based organization
- Other (specify):

**Storage** - record by this location lists all that apply

- Community health center
- Long-term care facility
- Community-based organization
- Other (specify):

**Populations served**

**Vaccine storage capabilities**

**Storage unit descriptions**

[illegible][illegible]

---

---

---

---

---

---

## COVID-19 Vaccines

Manufacturer	Type	Storage	Administration
Pfizer/BioNTech	mRNA	Ultra-cold frozen up to 6 months; Frozen for 5 days; Refrigeration for 5 days	2 doses (0, 21d) Second dose has a ±2 day window Requires reconstitution 5 dose vials
Moderna	mRNA	Frozen (-25° to -15° C) up to 6 months; Refrigerated (2° to 8° C) for 30 days; room temperature for 12hrs	2 doses (0, 28d) No reconstitution; No preservative 10 dose vials
Oxford/AstraZeneca	Viral vector (adenovirus)	Refrigeration for up to 6 months Protect from light	2 doses (0, 28d)
Sanofi/GSK	Protein subunit	Refrigeration	2 doses
Novavax	Protein subunit	Refrigeration for 6 months; room temperature for 24hrs	2 doses (0, 21d) No reconstitution
Johnson & Johnson	Viral vector	Frozen up to 2 years; Refrigeration up to 3 months	1 or 2 doses (0, 56d) are both being studied

---

---

---

---

---

---

---

---

## Side Effects

- Side effect rates varied by age group and dose number
- Rates of most systemic side effects were higher after the 2<sup>nd</sup> dose

### Results from the Pfizer vaccine study:

- ▶ 84% Injection site reaction
- ▶ 63% Fatigue
- ▶ 55% Headache
- ▶ 38% Muscle pain
- ▶ 32% Chills
- ▶ 24% Joint pain
- ▶ 14% Fever

---

---

---

---

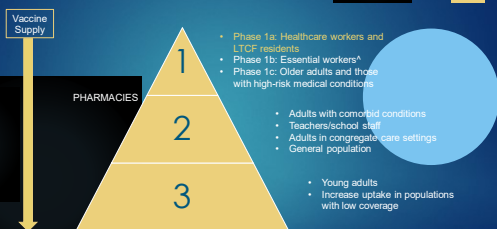
---

---

---

---

## Phased Approach to Distribution



\* Examples: Education Sector, Food & Agriculture, Utilities, Police, Firefighters, Corrections Officers, Transportation

---

---

---

---

---

---

---

---

## What About Special Populations?

- ▶ Pfizer study did not explicitly enroll the following patients:
  - ▶ Pregnant women (at higher risk of severe disease from COVID-19)
  - ▶ Children under 16 years of age
  - ▶ Immunocompromised patients

---

---

---

---

---

---

---

## Vaccine Storage and Handling Equipment

- ▶ Review the CDC Vaccine Storage and Handling Toolkit at: <https://www.cdc.gov/vaccines/hcp/admin/storage/toolkit/index.html>
- ▶ The PADOH requires additional training in vaccine cold chain.
  - ▶ CDC "You Call the Shots" training Module #10 on "Vaccine Storage and Handling"
  - ▶ <https://www2a.cdc.gov/nip/isd/ycts/mod1/courses/sh/ce.asp>
  - ▶ There may be separate storage and handling training available on each COVID-19 vaccine product. More to come.
- ▶ No need to purchase ultra-cold storage equipment since most community pharmacies won't be using this product
- ▶ May need to adjust freezer temperatures for Moderna vaccine if storing it with other frozen vaccines due to more narrow temperature range



---

---

---

---

---

---

---

## Vaccine Storage and Handling Equipment\*

1

- Stand-alone storage units are recommended.  
- If a combination household-grade unit is used, only store vaccines in the refrigerator side.

2

- Vaccine may not be stored in dormitory-style units no matter the length of time.

3

- Digital data loggers
  - Utilize a certified and calibrated digital data logger.
  - Have a back-up temperature monitoring device (TMD) in case of malfunction.
  - Utilize a TMD during vaccine transport.

\*Adapted from the Division of Immunizations, PADOH

---

---

---

---

---

---

---

## Ordering COVID-19 Vaccines: PA-SIIS

- ▶ PA-SIIS web application will be used to **order vaccine** and for **inventory management/tracking**

- ▶ PA-SIIS training is required for all users and available through TRAIN PA at <https://www.train.org/pa/welcome>.

- ▶ Do this training even if you are already enrolled and/or have used PA-SIIS before!



---

---

---

---

---

---

---

---

## Ordering COVID-19 Vaccines: PA-SIIS

- ▶ When pharmacies send in their COVID-19 Provider Agreement, that will trigger sending your pharmacy's information over to PA-SIIS for enrollment
  - ▶ Pharmacies already **enrolled** in PA-SIIS that currently document vaccines in PA-SIIS through the web application are ready to go.
  - ▶ Pharmacies not **currently enrolled** in PA-SIIS or those already enrolled in PA-SIIS that **don't** normally document in PA-SIIS through the web application will receive log-in credentials and training information
  - ▶ At the end of the PA-SIIS training there is a hyperlink to a **user account form** for those who do not already have user accounts.
- ▶ **Order first dose quantities** - do not save vaccine for second doses

---

---

---

---

---

---

---

---

## Vaccine Kits and Other Supplies

- ▶ Vaccine kits will be **automatically** shipped to match the quantity of your vaccine order (100 doses per kit)
- ▶ Kits will contain:
  - ▶ 105 safety needles
  - ▶ 105 syringes
  - ▶ 210 alcohol pads
  - ▶ 4 surgical masks
  - ▶ 2 face shields
  - ▶ 100 COVID-19 vaccination record cards
  - ▶ Additional supplies for vaccine requiring reconstitution
- ▶ Pharmacies may want to purchase additional sharps containers, bandages and extra PPE (gloves, surgical masks, gowns)
- ▶ Other supplies: hand sanitizer, disinfecting wipes, signage, extra masks

---

---

---

---

---

---

---

---

## Vaccine Clinics

- ▶ Preferred format during the initial patient surge
- ▶ Refer to the CDC document on vaccine clinics which includes a clinic checklist.  
<https://www.cdc.gov/vaccines/hcp/admin/mass-clinic-activities/index.html>
- ▶ Provide adequate space
  - ▶ Unidirectional patient flow; social distancing
  - ▶ Consider alternative community locations (e.g. fire hall) and start planning now
- ▶ Signage for flow, social distancing, and other instructions
- ▶ Ensure adequate parking (e.g. post-vaccine observation)
- ▶ Work with local law enforcement for traffic and crowd control

---

---

---

---

---

---

---

## How can I staff my vaccine clinic?

- ▶ Hold clinics “after hours” or when the pharmacy is normally closed (e.g. Sunday)
- ▶ Partner and share staff with other pharmacies
- ▶ Work with the PA Schools of Pharmacy to reach out to potential student volunteers

---

---

---

---

---

---

---

## Communication with the Public

- ▶ CDC information on patient communication and making a strong vaccine recommendation <https://www.cdc.gov/vaccines/covid-19/hcp/index.html>
- ▶ VaccineFinder
  - ▶ Free, online resource where patients can find locations with vaccines
  - ▶ Register your pharmacy at <https://vaccinefinder.org>
  - ▶ PA-SIIS will push your inventory information to VaccineFinder
- ▶ Pharmacy Website
  - ▶ Advertise vaccine availability
  - ▶ Facilitate patient sign-ups using a scheduling app
  - ▶ Provide access to the COVID-19 vaccine intake/screening form
  - ▶ Provide access to VIS and/or EUA fact sheets

---

---

---

---

---

---

---

## Communication with the Public

- ▶ Social Media
- ▶ Interactive Voice Response (IVR)
- ▶ Local newspapers and radio
- ▶ In store signage, posters, flyers
- ▶ PA DOH Communication Toolkit
  - ▶ Messaging for social media and print materials

<https://www.health.pa.gov/topics/diseases/coronavirus/Pages/Social-Media.aspx>



---

---

---

---

---

---

---

## Scheduling Patients

- ▶ Schedule patients to support crowd control
- ▶ Plan for an influx of new patients that are not in your prescription dispensing system
- ▶ Plan to use all of your vaccine inventory
  - ▶ Vaccine will come in 100 dose increments
  - ▶ Once punctured, multi-dose vials must be used within a few hours
- ▶ Use a scheduling app (e.g. Appointlet, Calendly, Setmore)
  - ▶ Send appointment reminders to patients
  - ▶ Work on any electronic device
  - ▶ Allows you to anticipate patient volume

---

---

---

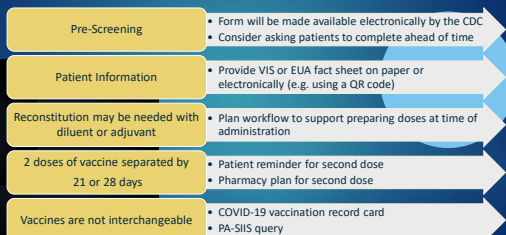
---

---

---

---

## Vaccine Administration



---

---

---

---

---

---

---

## Documentation and Reporting

- ▶ If your pharmacy does not have an interface with PA-SIIS for documenting vaccine administration, you will need to enter vaccine administration manually **within 24 hours**
- ▶ Report vaccine administration to PA-SIIS **within 24 hours**
- ▶ Provide each patient with a **vaccine administration record card**
- ▶ Report any adverse effects through VAERS (Vaccine Adverse Event Reporting System)
- ▶ Encourage first vaccine recipients to enroll in V-SAFE
  - ▶ V-SAFE is a smartphone text messaging system to follow-up on adverse events

---

---

---

---

---

---

---

## Billing and Payment

- ▶ Cannot sell or seek reimbursement for vaccines or supplies received at no cost from the federal government
- ▶ Must administer vaccine regardless of patient's ability to pay administration fees
- ▶ Can seek reimbursement for an administration fee
  - ▶ For 2-dose Moderna vaccine, Medicare (Part B) will reimburse
    - ▶ \$16.94 for dose 1 (CPT code 0011A for Moderna Vaccine administration)
    - ▶ \$28.39 for dose 2 (CPT code 0012A for Moderna Vaccine administration)
    - ▶ CPT code 91301 for Moderna Vaccine

---

---

---

---

---

---

---

## Resources and References

- ▶ PA DOH COVID-19 Vaccine Provider Agreement.  
Available at: <https://expressforms.pa.gov/apps/pa/DOH/CDC-COVID-19VaccineAdminPAProviderAgreement>
- ▶ Centers for Disease Control and Prevention. "You Call the Shots" Web-based Training Program.  
Available at: <https://www.cdc.gov/vaccines/cd-youcalltheshots.html>
- ▶ PA DOH Train PA: <https://www.train.org/pa/welcome>
- ▶ CDC Vaccine Storage and Handling Toolkit.  
Available at: <https://www.cdc.gov/vaccines/hcp/admin/storage/toolkit/index.html>
- ▶ Centers for Disease Control and Prevention. "Guidelines for Planning Vaccination Clinics Held at Satellite, Temporary, or Off-Site Locations."  
Available at: <https://www.cdc.gov/vaccines/hcp/admin/mass-clinic-activities/index.html>
- ▶ American Pharmacists Association. "Pharmacists' Guide to Coronavirus."  
Available at: <https://www.pharmacist.com/coronavirus>

---

---

---

---

---

---

---

# Questions?

Email me at [coley@pitt.edu](mailto:coley@pitt.edu) for more information

---

---

---

---

---

---

---